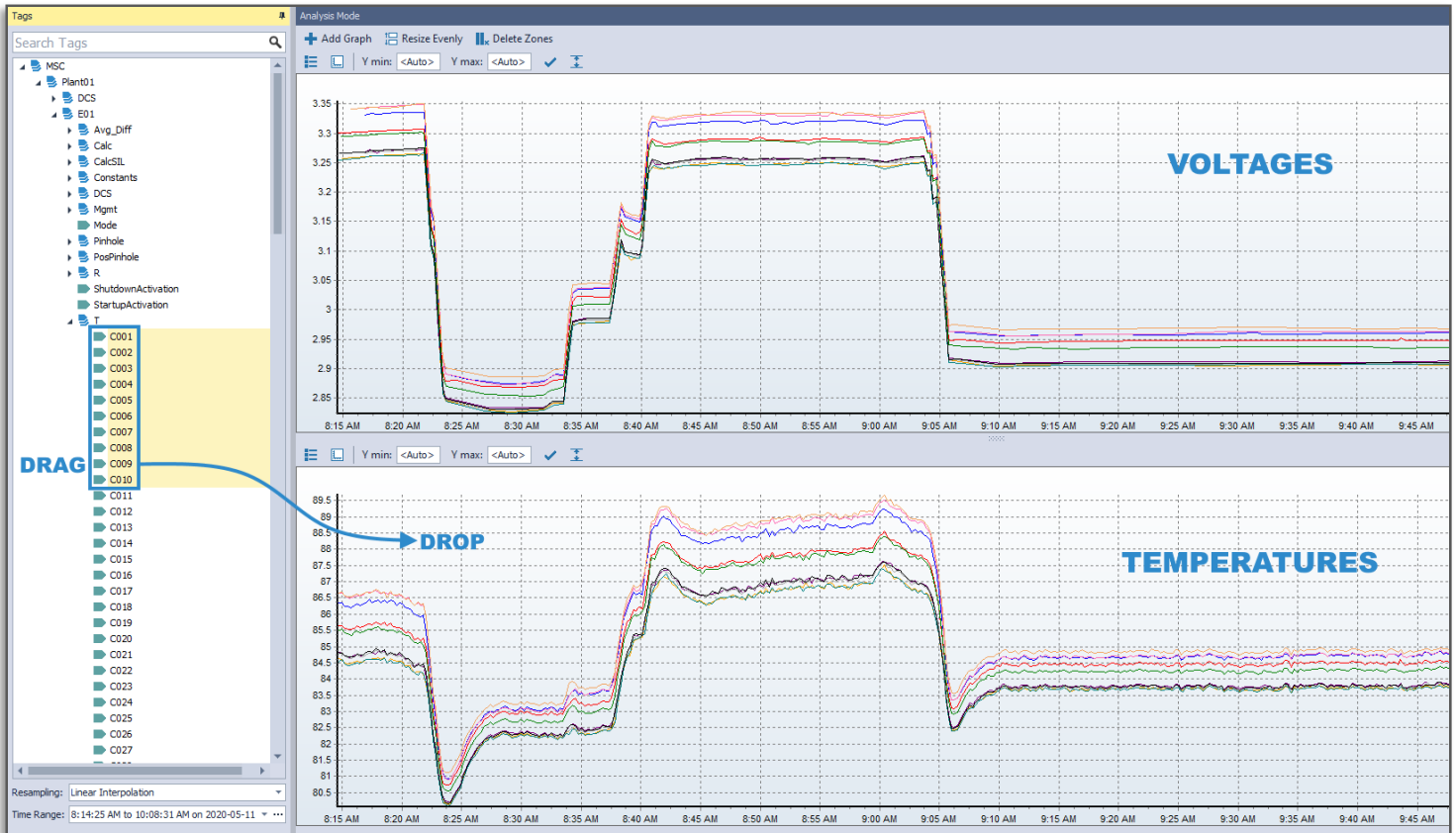


EMOS® VISUAL EXTRACTOR

ANALYZE process value trends, **REPLAY** significant operational time periods (e.g. startups, shutdowns), and **EXPORT** your data.



OVERVIEW

| BENEFITS | FEATURES |
|---|---|
| Perform In Depth Analysis of Process Data | Drag and Drop Historical Trending |
| Export Plant Data to Excel or Another R2 Database | Easy-to-Use Data Export Wizard |
| Replay Past Events or Near Misses in Real-Time | Bar Chart Replay Function (Snapshot Mode) |
| Compare Data Between Cells or Electrolyzers | Stackable/Synchronized Graphs for Multiple Tags |



PRODUCT DATA SHEET

World Trade Center | 380 Saint-Antoine Street West, Suite 2000 | Montreal, Quebec, Canada, H2Y 3X7
T. +1.514.987.1303 | F. +1.514.987.1305 | R2.ca

MKD0088 v1.0



ANALYZE

Whether you want to dig into a recent electrolyzer abnormal behaviour, ascertain if similar events exhibited similar data patterns or trend cell voltages, Visual Extractor offers you the capabilities to analyze your plant data with an intuitive icon-based navigation. The time range for the analysis is entirely customizable, and the resulting data is displayed in a clear graph.

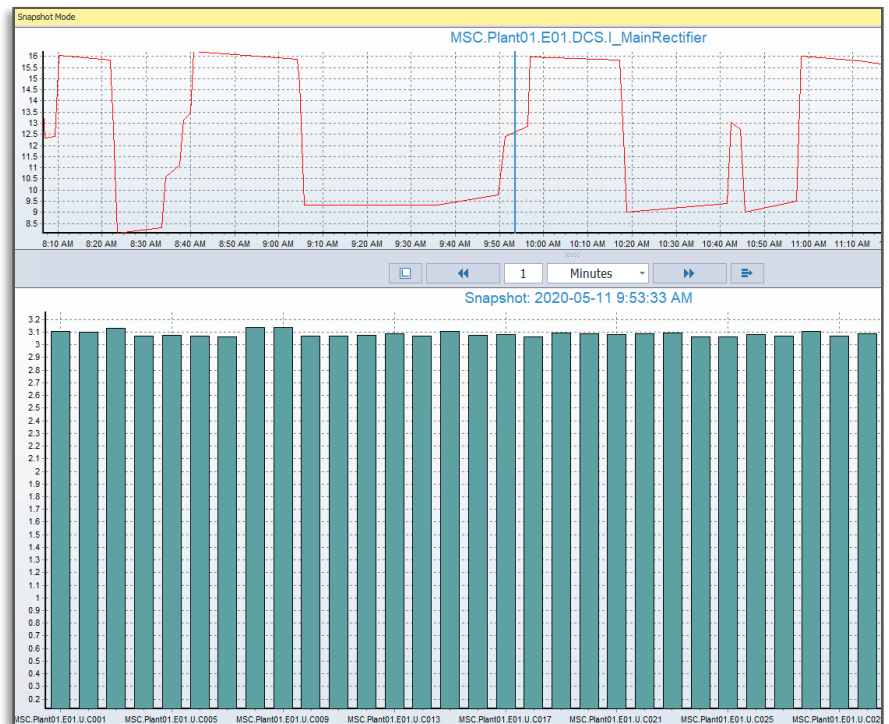
Comparing data between different cells or electrolyzers for the same period can uncover interesting insights to better understand plant behaviour. Visual Extractor allows you to stack as many graphs as desired, each graph containing one or more tags.

REPLAY

You can also replay real-time values for specific time ranges, allowing you to investigate past events or near misses. The replay functionality also enables you to observe how changes in process values over time affect other related values (graph on right).

EXPORT

Visual Extractor enables you to export your data to a csv format (e.g., Excel) or to another R2 database for further analysis with an easy-to-use Wizard. You can also create scripts to schedule re-occurring data exports.



SYSTEM REQUIREMENTS

| Client | |
|-------------------|-------------------------|
| Operating System | Windows 7 64-bit |
| CPU | Quad Core |
| RAM | 4 GB (8 GB Recommended) |
| Hard Drive | 500 GB |
| Screen Resolution | 1920 x 1080 |

ORDERING INFORMATION

| Part # | Description |
|--------|------------------------|
| SW150 | EMOS® Visual Extractor |



PRODUCT DATA SHEET

World Trade Center | 380 Saint-Antoine Street West, Suite 2000 | Montreal, Quebec, Canada, H2Y 3X7
T. +1.514.987.1303 | F. +1.514.987.1305 | R2.ca

MKD0088 v1.0

