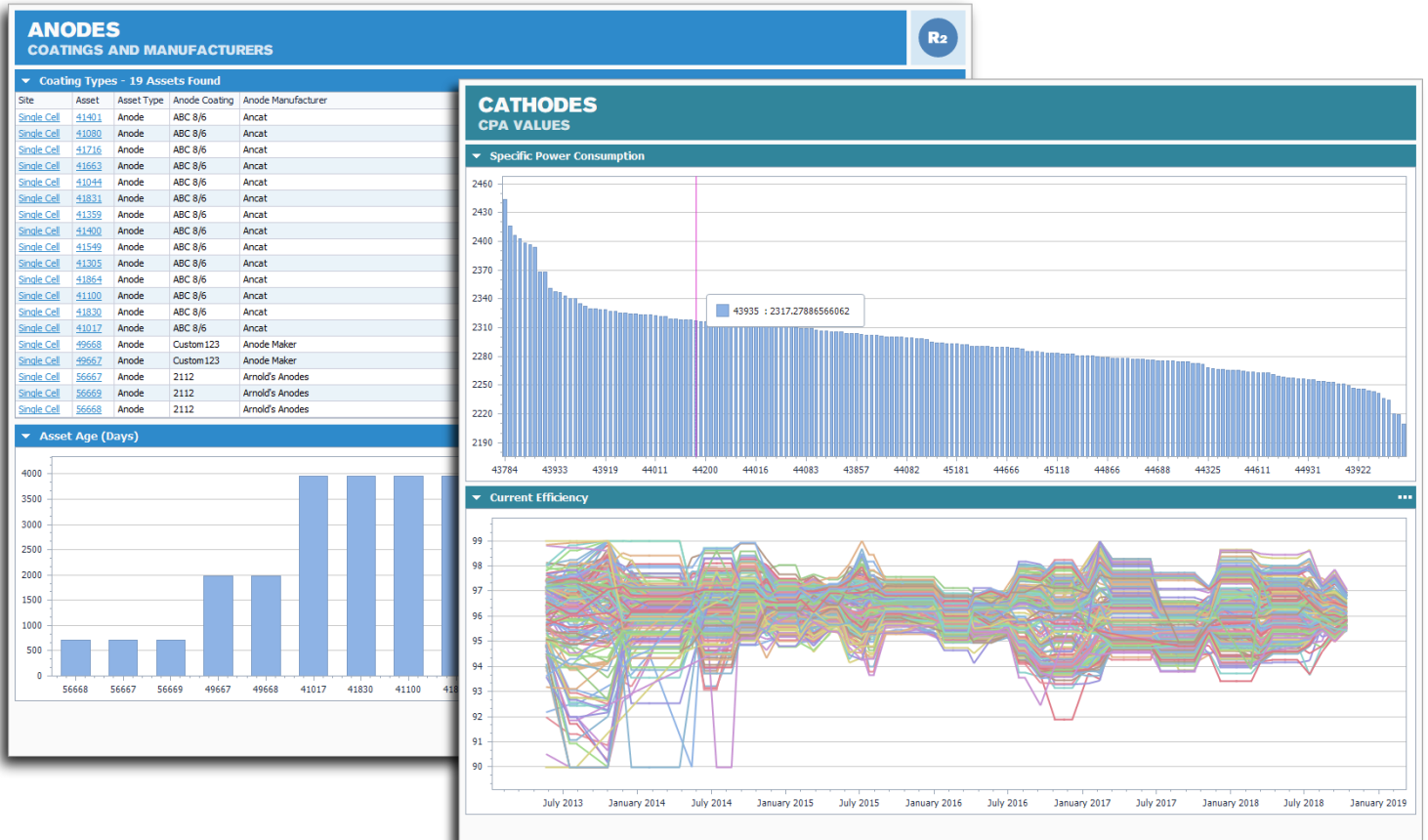




# EMOS® 6.0 ASSET MANAGEMENT DATABASE

SIMPLIFY your asset tracking, PRIORITIZE your maintenance, and STANDARDIZE your plant data.



## OVERVIEW

BENEFITS	FEATURES
Save Time and Increase your Productivity	Drag and Drop Asset Movement and Shortcuts
Improve the Quality of your Data	Time and Type Based Input Validation
Designed for the Chlor-Alkali Industry	Industry-Specific Visuals and Presets
Lower your Training Costs	Simple and Intuitive User Interface
Adapt the Software to Fit your Workflow	User-Friendly Configuration and Customization
Export/Import Data To and From your Existing Systems	Excel Compatibility and Customizable Forms



PRODUCT DATA SHEET

MKD0027 v3.1

World Trade Center | 380 Saint-Antoine Street West, Suite 2000 | Montreal, Quebec, Canada, H2Y 3X7  
T. +1.514.987.1303 | F. +1.514.987.1305 | R2.ca


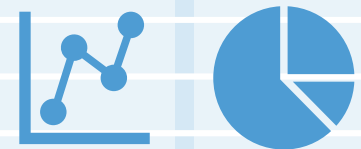


## SIMPLIFY YOUR ASSET TRACKING

The **EMOS® Asset Management Database** (AMD) allows you to follow your assets (anodes, cathodes, membranes, and more) from the day they were received to the day they are eventually decommissioned, keeping track of all relevant properties along the way, such as: types, manufacturers, statuses, comments, inspection/lab results, and anything else you wish to track.

## WHAT'S NEW IN VERSION 6?

In addition to a brand new user interface, as well as multiple smaller usability and performance enhancements, you can now perform in-depth analysis of your asset data with our more advanced reporting options. New features include:

Reports by Position		Advanced Sorting	
Maintenance Reports		CPA Values Integration*	
Time-Based Reports		Customizable Graphs	
Data Trends		Conditional Formatting	

*\*Including  $U_0$ ,  $U_n$ , CE, k, and SPC (if available).*

## PRIORITIZE YOUR MAINTENANCE

If you're using an older version of the EMOS® Asset Management Database, upgrading to the latest version will allow you to get even more value from your data.

BENEFITS	FEATURES
Find your Assets Fast	Improved Search Functionality
Follow your Assets Outside the Cell Room	Support for New Assets, Technologies, and Locations
Find Trouble Spots and Plan your Maintenance	Built-In Customizable Reporting
Make Changes with Confidence and Keep your Data Safe	Built-In Backup and Restore Functionality
Upgrade your Software with Ease	Fully Compatible with Older Versions of AMD

## ADDITIONAL INSIGHTS

A regularly maintained AMD database is a required prerequisite for the comprehensive predictive maintenance strategy provided by the **EMOS® Cell Performance Analyzer** (CPA) service and the **EMOS® Asset Performance Reports** (APR).



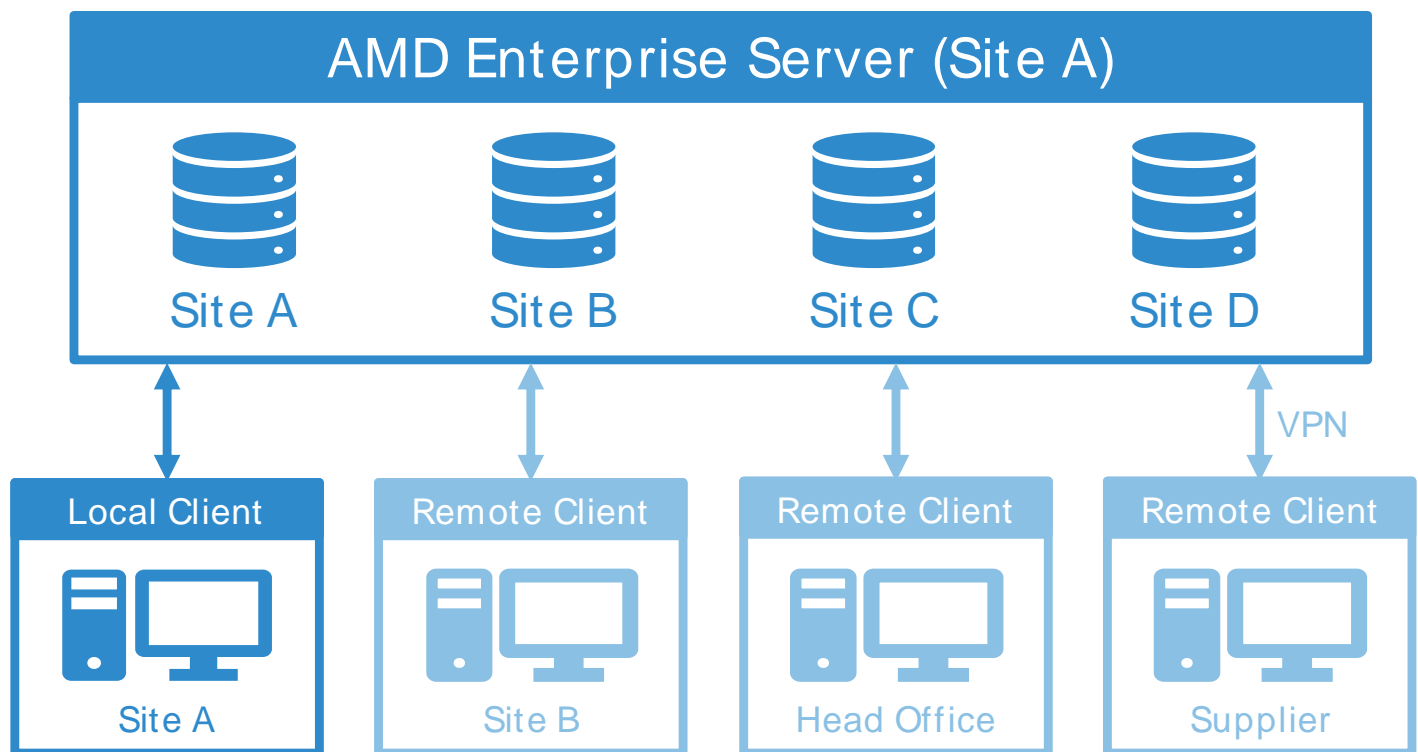
## STANDARDIZE YOUR PLANT DATA

Avoid the pitfalls inherent with having different asset tracking solutions at each of your sites by adopting the **ENTERPRISE VERSION** of the EMOS® Asset Management Database.

The **ENTERPRISE VERSION** includes all of the functionalities of the standard version, along with these additional features.

BENEFITS	FEATURES
Manage All your Plants from a Single Place	Support for Multiple Databases
Standardize your Plant Data	Centralized Database Server
Increase your Productivity	Support for Multiple Concurrent Users
Install One or More AMD Clients at Each of your Plants	Support for Remote Clients
Access your Asset Data from Third-Party Systems	Rest API with HTTP and JSON Support

The following diagram represents the layout for a typical **ENTERPRISE VERSION** installation, showing how it would fit into your corporate network.



## WHAT'S INCLUDED?

The following items are included with every purchase of the AMD software.



The software is delivered **fully configured** and **customized** to your specific needs.



The **initial database configuration**, including your **currently installed assets** and inventory.



**One year** of (renewable) customer **support**.

## ADDITIONAL OPTIONS

If you need more than what's included, the following options are also available.



**Historical data and asset tracking history** can be imported from your existing system.



On site, **hands on training** with the software, adapted to your workflow. **[RECOMMENDED]**



AMD can be **translated** into your **preferred language**.

## SYSTEM REQUIREMENTS

The computers (or virtual machines) on which AMD will be installed must meet the following minimum requirements.

Client	
Operating System	Windows Pro 10 64-bit
CPU	Quad Core
RAM	16 GB
Hard Drive	250 GB
Screen Resolution	1920 x 1080

Server	
Operating System	Windows Server 2016 64-bit
CPU	8-core
RAM	16 GB
Hard Drive	500 GB
Network	1 GB/s

## ORDERING INFORMATION

Part #	Description
SW310	EMOS® Asset Management Database

## RELATED PRODUCTS

Part #	Description
SWPER	EMOS® Asset Performance Reports
EN505	EMOS® Cell Performance Analyzer

