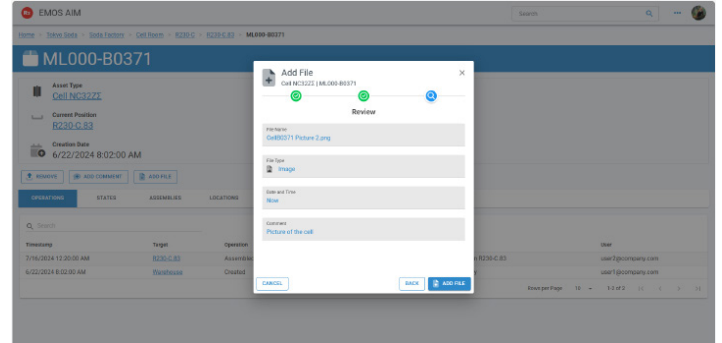
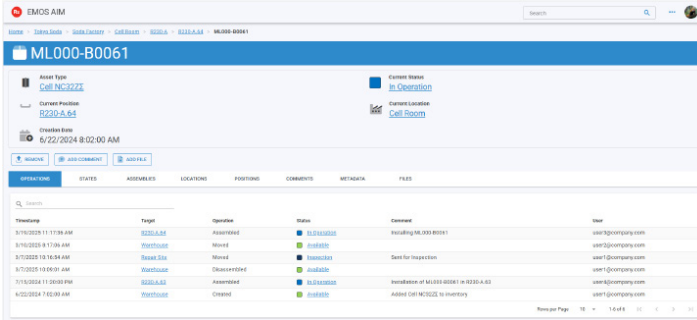
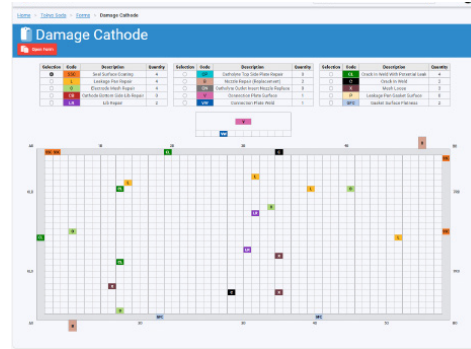
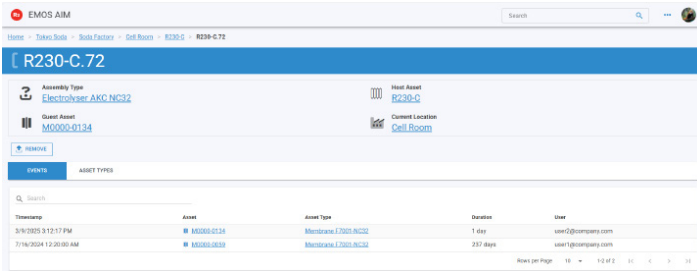




EMOS® AIM: REAL-TIME ASSET INVENTORY MANAGEMENT

SIMPLIFY ASSET TRACKING, PRIORITIZE MAINTENANCE, AND STANDARDIZE YOUR DATA - ANYWHERE, ANYTIME.



FEATURES	BENEFITS
Cloud integrated security	SAML authentication and authorization
Cloud based web application	Scalable, cost-effective, and accessible
Customizable asset type workflow	Streamline operations & compliance
Asset transaction ledger	Transparent and auditable asset management
Process forms customization and approval process	Digitized efficient workflows
Asset media file attachment	Comprehensive asset lifecycle



PRODUCT DATA SHEET

World Trade Center, 380 St-Antoine W., Suite 2000, Montreal, Quebec, Canada H2Y 3X7

MKD0103 1V0 - EMOS AIM

514-987-1303 | R2.ca

Information contained in this brochure is subject to patents and constitutes proprietary information of R2. No part of this document may be reproduced, distributed, or disclosed without the prior written permission of R2. All rights reserved. Copyright © Recherche 2000 Inc. 1996-2025.

EMOS® AIM (Asset Inventory Management) enables users to track an asset's full lifecycle, ensuring a digital foundation for predictive maintenance. From any mobile device, field workers can instantly capture asset data, ensuring accuracy and efficiency.

WHAT'S NEW IN AIM CLOUD?

In addition to a new user interface, as well as multiple smaller usability and performance enhancements, you can now perform in-depth analysis of your asset data with our more advanced reporting options. New features include:

- **Cloud Integrated Security** – Secure, single sign-on remote access to real-time asset data from any device, anywhere.
- **Real-Time Asset Scanning** – OCR, voice, and keyboard input options for efficient data entry.
- **Enhanced Data Integrity** – Centralized database with traceable history and time-based validation.
- **Customizable Reporting** – Generate tailored reports and export data in Microsoft Excel.
- **Seamless Integration** – API connectivity with third-party systems for streamlined data exchange. Integrate seamlessly with your existing ERP, MES, and safety systems.
- **Multi-User/Role Support** – Concurrent access for multiple plants, enhancing collaboration.
- **Intelligent Maintenance Planning** – Maintenance planning based on R2 predictive analytics for better asset performance and planning.
- **Secure Cloud Infrastructure** – High-performance, secure hosting with automatic backups.
- **Real-Time Maintenance** – Update asset records including location, comments, media files, inspection results, and repair reports on any device.
- **Asset Clinical Health Record** – Access asset history including associated media files, inspection, and repair reports.

WHY UPGRADE TO EMOS® AIM CLOUD?

- **Increase Productivity** – Automate and standardize workflows, reduce manual data entry, and focus on high-value tasks.
- **Improve Data Accuracy** – Eliminate paper records and Excel errors with centralized, cloud-based storage.
- **Enable Predictive Maintenance** – Gain actionable insights into asset performance and trends.
- **Support Remote and Multi-Site Operations** – Standardize asset management across all plants and locations, with consistent user experience and cross-platform compatibility of desktops, tablets and mobile devices.
- **Lower IT Costs and Complexity** – No on-premises servers required, with automatic updates and backups.



PRODUCT DATA SHEET

World Trade Center, 380 St-Antoine W., Suite 2000, Montreal, Quebec, Canada H2Y 3X7

MKD0103 1V0 - EMOS AIM

514-987-1303 | R2.ca

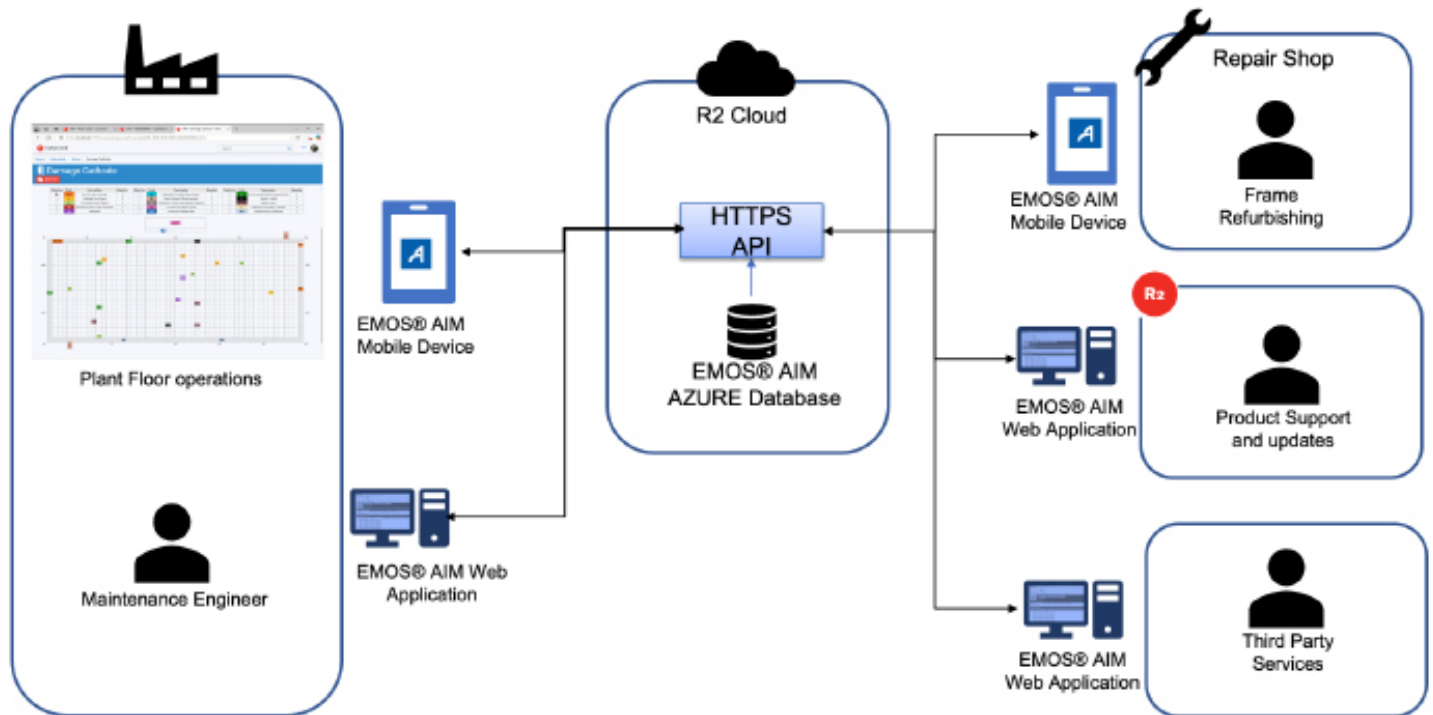
Information contained in this brochure is subject to patents and constitutes proprietary information of R2. No part of this document may be reproduced, distributed, or disclosed without the prior written permission of R2. All rights reserved. Copyright © Recherche 2000 Inc. 1996-2025.

EMOS® AIM: REAL-TIME ASSET INVENTORY MANAGEMENT

For companies managing multiple sites, **EMOS® AIM** includes:

- **Multi-Plant Data Standardization** – Unified asset management across all facilities.
- **Scalable Cloud Infrastructure** – High-performance, secure hosting with automatic backups.
- **Cross-Platform Compatibility** – Access data from desktops, laptops, tablets, and mobile devices.
- **Comprehensive API Support** – Integrate seamlessly with your existing ERP, MES, and safety systems.

The following diagram shows how **EMOS® AIM** would work in your corporate network.



WHAT'S INCLUDED?

Every purchase of **EMOS® AIM** includes:



Full software deployment, customized to your operational needs.



Support & maintenance of EMOS® AIM.



Eight (8) hours of remote/on-line training per site (8 hours for first year; subsequent years include 4 hours of training refresh)* - No user limit.

*User training (remote or on-site options available)



PRODUCT DATA SHEET

World Trade Center, 380 St-Antoine W., Suite 2000, Montreal, Quebec, Canada H2Y 3X7




MKD0123 1V0 - EMOS AIM

514-987-1303 | R2.ca

Information contained in this brochure is subject to patents and constitutes proprietary information of R2. No part of this document may be reproduced, distributed, or disclosed without the prior written permission of R2. All rights reserved. Copyright © Recherche 2000 Inc. 1996-2025.

ADDITIONAL OPTIONS

If you need more than what's included, the following options are also available.

	Historical Data Migration - Import legacy asset tracking data for continuity.
	Extended Support Package - Dedicated technical support and advanced training.
	Custom Language Support - Translate the interface to match your plant's needs.

SYSTEM REQUIREMENTS

As a cloud-based SaaS solution, **EMOS® AIM** has minimal system requirements and can run on any device that can access the internet:

Part Number	
Internet Connection	For the best experience, a high-speed internet connection (10 Mbps or higher) is recommended.
Web Browser Requirements	iOS, Android, and Windows

ORDERING INFORMATION

Part Number	Description
SW046	EMOS® AIM (annual license) - Initial Set-Up Fee (incl. Training)*
SW045	EMOS® AIM (annual license)

RELATED PRODUCTS

Part Number	Description
SWPER	EMOS® Asset Performance Reports
EN505	EMOS® Cell Performance Analyzer

ADDITIONAL INSIGHTS

A regularly maintained AMD database is a prerequisite for the comprehensive predictive maintenance strategy provided by the **EMOS® Cell Performance Analyzer (CPA)** service and the **EMOS® Asset Performance Reports (APR)**.



PRODUCT DATA SHEET

World Trade Center, 380 St-Antoine W., Suite 2000, Montreal, Quebec, Canada H2Y 3X7

MKD0103 1V0 - EMOS AIM

514-987-1303 | R2.ca

Information contained in this brochure is subject to patents and constitutes proprietary information of R2. No part of this document may be reproduced, distributed, or disclosed without the prior written permission of R2. All rights reserved. Copyright © Recherche 2000 Inc. 1996-2025.