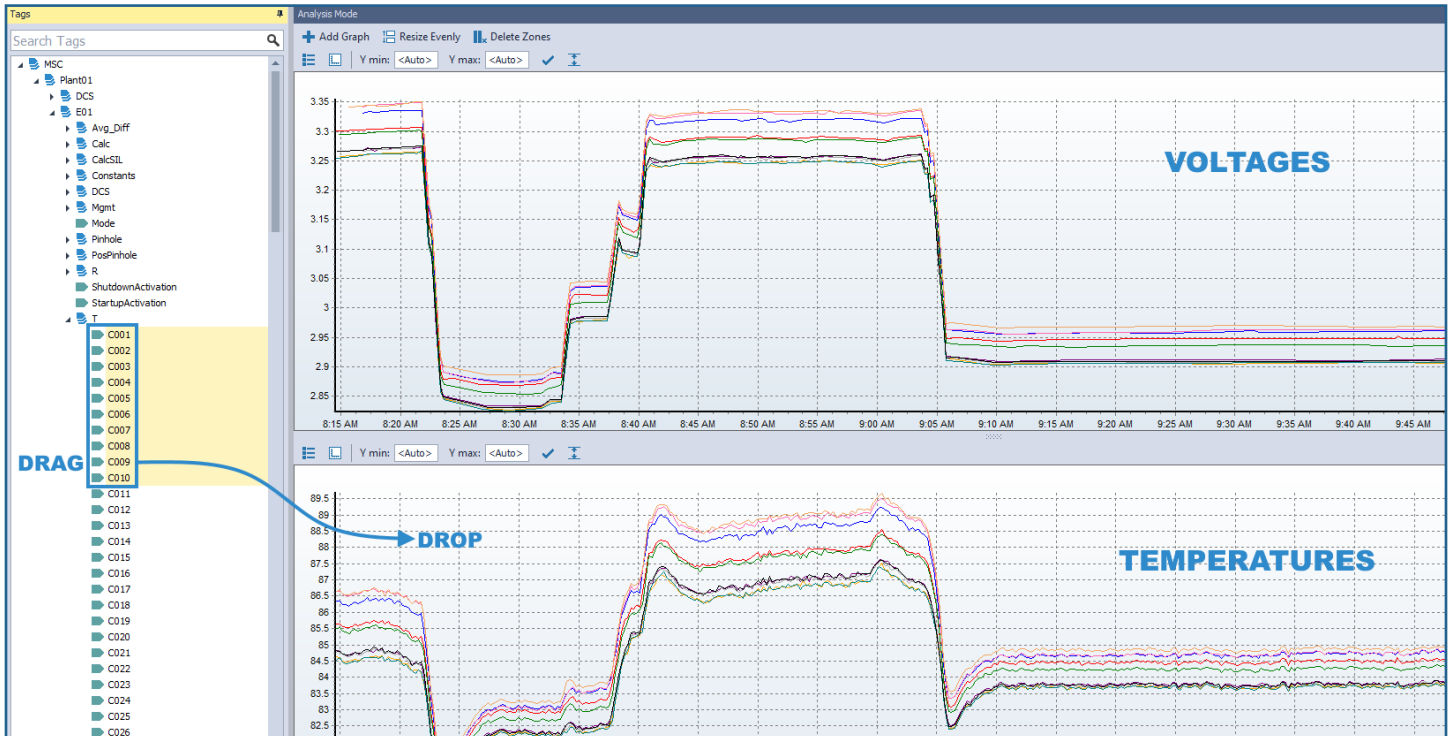


EMOS® VISUAL EXTRACTOR

ANALYZE process value trends, **REPLAY** significant operational time periods (e.g. startups, shut-downs), and **EXPORT** your data.



FEATURES	BENEFITS
Drag and drop historical trending	Perform in-depth analysis of process data
Easy-to-use data export wizard	Export plant data to excel or another R2 database
Bar chart replay function (snapshot mode)	Replay past events or near misses in real-time
Stackable/synchronized graphs for multiple tags	Compare data between cells or electrolyzers



PRODUCT DATA SHEET

MKD0088 2V0 - EMOS Visual Extractor

World Trade Center, 380 St-Antoine W., Suite 2000, Montreal, Quebec, Canada H2Y 3X7

514-987-1303 | R2.ca

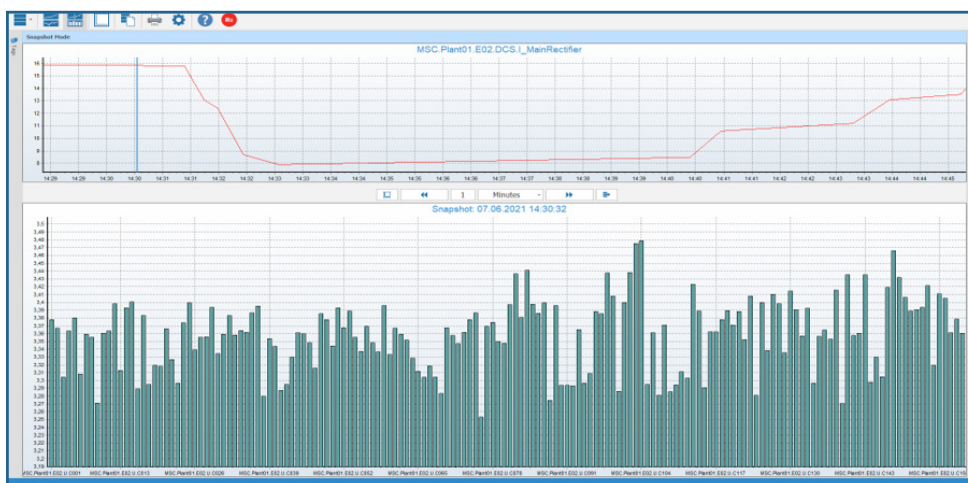
Information contained in this brochure is subject to patents and constitutes proprietary information of R2. No part of this document may be reproduced, distributed, or disclosed without the prior written permission of R2. All rights reserved. Copyright © Recherche 2000 Inc. 1996-2025.

ANALYZE

Whether you want to dig into a recent electrolyzer abnormal behaviour, ascertain if similar events exhibited similar data patterns or trend cell voltages, **EMOS® Visual Extractor** offers you the capabilities to analyze your plant data with an intuitive icon-based navigation. The time range for the analysis is entirely customizable, and the resulting data is displayed in a clear graph. Comparing data between different cells or electrolyzers for the same period can uncover interesting insights to better understand plant behaviour. **EMOS® Visual Extractor** allows you to stack as many graphs as desired, each graph containing one or more tags.

REPLAY

You can also replay real-time values for specific time ranges, allowing you to investigate past events or near misses. The replay functionality also enables you to observe how changes in process values over time affect other related values (graph below).



EXPORT

Visual Extractor enables you to export your data to a csv format (e.g., Excel) or to another R2 database for further analysis with an easy-to-use Wizard. You can also create scripts to schedule reoccurring data exports.

SYSTEM REQUIREMENTS

Visual Extractor Desktop client	
Operating System	Microsoft Windows 7, Windows 10 and Windows 11, 64-bit
CPU	Intel® Core i5 6th generation (or an equivalent AMD processor) or above
RAM	8 GB
Hard Drive	500 GB SSD (Solid State Drive) recommended
Screen Resolution	1920 x 1080 (or better)

ORDERING INFORMATION

Part Number	Description
SW150	EMOS® Visual Extractor



PRODUCT DATA SHEET

World Trade Center, 380 St-Antoine W., Suite 2000, Montreal, Quebec, Canada H2Y 3X7

MKD0088 2V0 - EMOS Visual Extractor

514-987-1303 | R2.ca

Information contained in this brochure is subject to patents and constitutes proprietary information of R2. No part of this document may be reproduced, distributed, or disclosed without the prior written permission of R2. All rights reserved. Copyright © Recherche 2000 Inc. 1996-2025.