



R2 POWER PACK – MODA (EH500) ACCESSORY

OVERVIEW

- Double Insulated Power Supply
- IP66 Rating
- Built for Harsh Environments
- Provides Power Supply for up to 6 **MODA (EH500)**
- Evaluation of cell component health before energizing

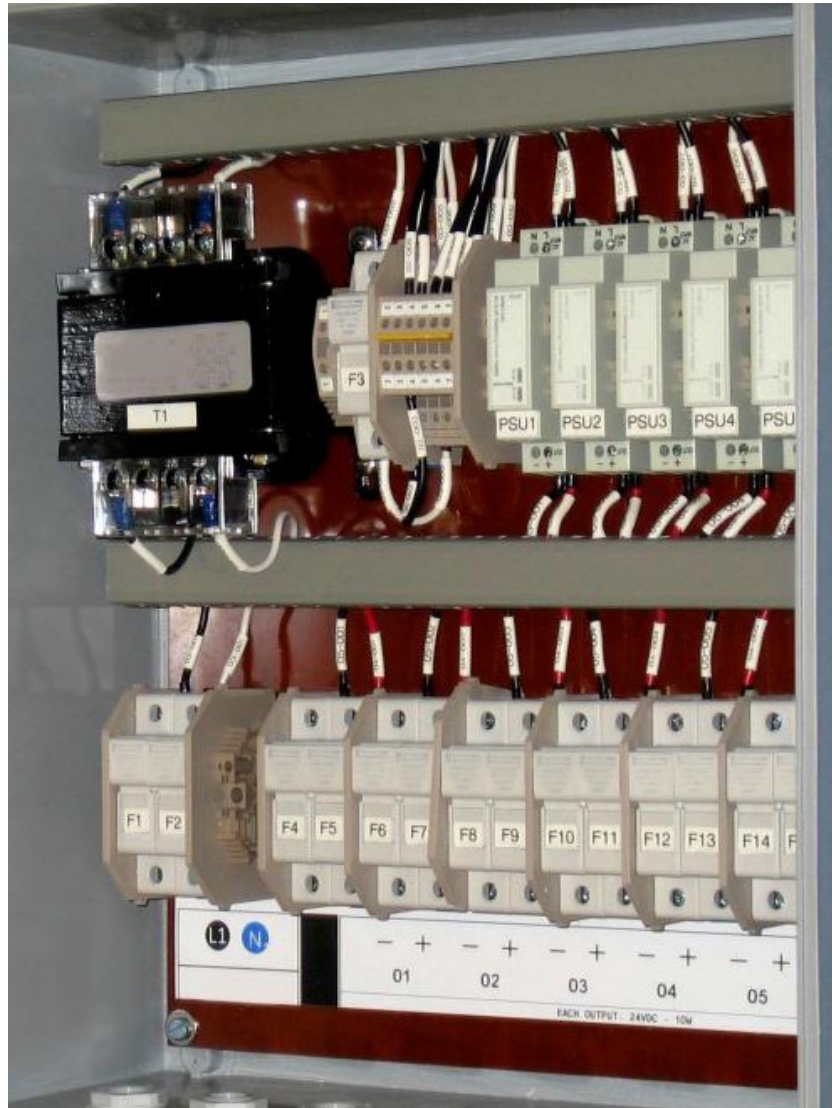
SAFE AND STABLE POWER SUPPLY

Following recent research, R2 has found that insightful indication of the component health can be observed while the electrolyzer is completely idle (i.e. no polarisation current). To view and record these very low voltage behaviors, the voltage acquisition units (**MODA**) are required to be powered independantly. Standard industrial power supplies cannot be used because they do not provide a sufficient level of electrical isolation.

R2's solution is the **MODA External Power Pack**: a double insulated module capable of providing safe and stable power supply for up to (6) **MODA** units.

The **MODA External Power Pack** IP66 rating allows it to be installed in a harsh environment such as a cell-house.

Designed to IEC 61010-1, the Safety Requirements for Electrical Equipment for Measurement, Control and Laboratory Use; the **MODA External Power Pack** is designed, built and tested expressively to provide the required electrical safety for the **MODAs** installed on the electrolyzer.



PRODUCT DATA SHEET

World Trade Center, 380 St-Antoine W., Suite 2000, Montreal, Quebec, Canada H2Y 3X7

MKD0033 2V0 - EH181 Power Pack (6)

514-987-1303 | R2.ca

Information contained in this brochure is subject to patents and constitutes proprietary information of R2. No part of this document may be reproduced, distributed, or disclosed without the prior written permission of R2. All rights reserved. Copyright © Recherche 2000 Inc. 1996-2025.

R2 POWER PACK – MODA (EH500) ACCESSORY

TECHNICAL SPECIFICATIONS

General	
Supply Input Range:	120VAC or 240VAC, 50/ 60Hz
Current Consumption:	200VA
Electrical Isolation:	600V CAT II I, 1000V CAT II
Supply Output:	6x 24VDC (10W)

Environmental	
Operating Temperature:	-20 to 50°C
Storage Temperature:	-20 to 60°C
Altitude:	2000m max.

Mechanical	
Weight:	10 Kg (22 lbs)
IP Rating	IP66
Dimensions W x H x D (mm)	420mm x 380mm x 220mm (16" x 14" x 10")

Standards
IEC 61010-1 Safety Requirements for Electrical Equipment for Measurement, Control and Laboratory Use

Approvals
CE

ORDERING INFORMATION

Part Number	Description
EH181-120	MODA External Power Pack with (6) outputs for 120VAC operation.
EH181-240	MODA External Power Pack with (6) outputs for 240VAC operation.

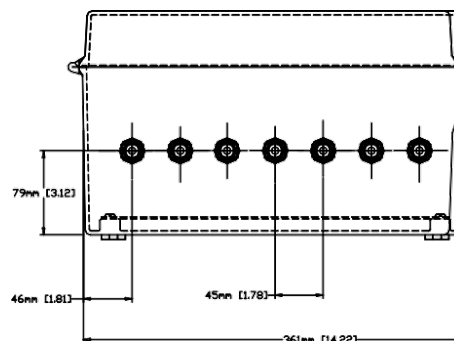
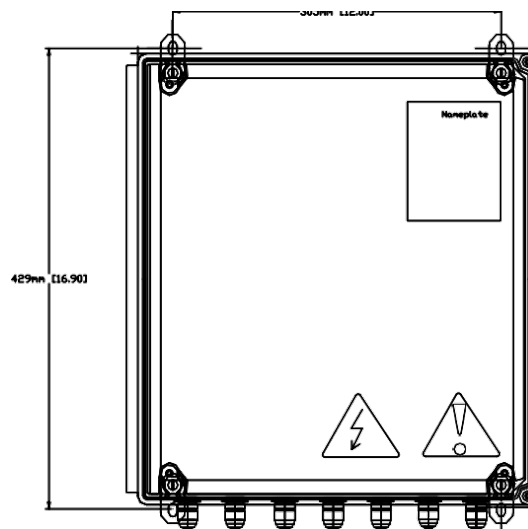
ACCESSORIES & SPARE PARTS

Part Number	Description
EH160-2	Spare Switched Mode Power Supply 120/ 240 Input 24VDC Output 10W
EH137-2	EH181-120 Spare Fuse Kit (2 Primary, 2 Secondary)
EH137-3	EH181-240 Spare Fuse Kit (2 Primary, 2 Secondary)

ADDITIONAL INFORMATION

R2's External Power Pack is part of the **R2 EMOS SIL2 SAFETY-MAINTENANCE & OPTIMIZATION SYSTEM**. Contact R2 for more information.

DIMENSIONAL DRAWING



PRODUCT DATA SHEET

World Trade Center, 380 St-Antoine W., Suite 2000, Montreal, Quebec, Canada H2Y 3X7

MKD0033 2V0 - EH181 Power Pack (6)

514-987-1303 | R2.ca

Information contained in this brochure is subject to patents and constitutes proprietary information of R2. No part of this document may be reproduced, distributed, or disclosed without the prior written permission of R2. All rights reserved. Copyright © Recherche 2000 Inc. 1996-2025.