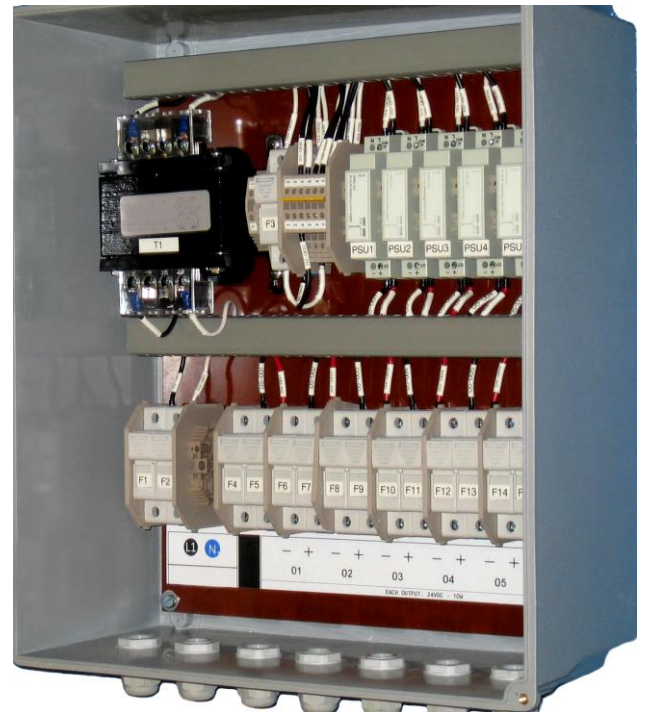


R2 POWER PACK – MODA (EH500) ACCESSORY

- Double Insulated Power Supply
- IP66 Rating
- Built for Harsh Environments
- Provides Power Supply for up to 6 MODA (EH500)
- Evaluation of cell component health before energizing



Safe and Stable Power Supply

Following recent research, R2 has found that insightful indication of the component health can be observed while the electrolyser is completely idle (i.e. no polarisation current). To view and record these very low voltage behaviors, the voltage acquisition units (MODA) are required to be powered independantly. Standard industrial power supplies cannot be used because they do not provide a sufficient level of electrical isolation.

R2's solution is the MODA External Power Pack: a double insulated module capable of providing safe and stable power supply for up to (6) MODA units.

The MODA External Power Pack IP66 rating allows it to be installed in a harsh environment such as a cell-house.

Designed to IEC 61010-1, the Safety Requirements for Electrical Equipment for Measurement, Control and Laboratory Use; the MODA External Power Pack is designed, built and tested expressively to provide the required electrical safety for the MODAs installed on the electrolyser.

Technical Specifications

General	
Supply Input Range:	120VAC or 240VAC, 50/60Hz
Current Consumption:	200VA
Electrical Isolation:	600V CAT III, 1000V CAT II
Supply Output:	6x 24VDC (10W)

Environmental	
Operating Temperature:	-20 to 50°C
Storage Temperature:	-20 to 60°C
Altitude:	2000m max.

Mechanical	
Weight:	10 Kg (22 lbs)
Dimensions W x H x D	420mm x 380mm x 220mm (16" x 14" x 10")
IP Rating	IP66

Standards
IEC 61010-1 Safety Requirements for Electrical Equipment for Measurement, Control and Laboratory Use

Approvals
CE

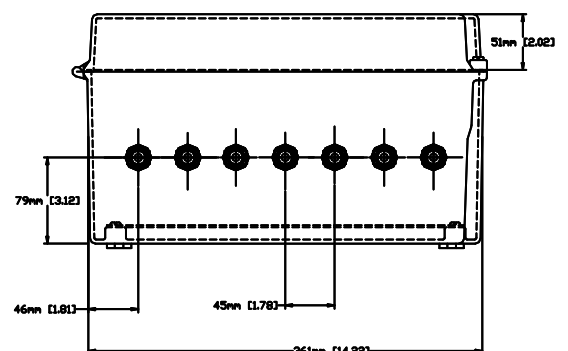
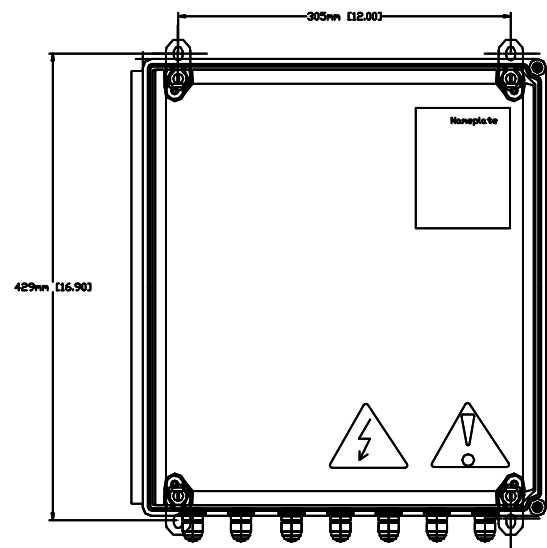
Ordering Information

Part Number	Description
EH181-120	MODA External Power Pack with (6) outputs for 120VAC operation.
EH181-240	MODA External Power Pack with (6) outputs for 240VAC operation.

Accessories & Spare Parts

Part Number	Description
EH160-2	Spare Switched Mode Power Supply 120/240 Input 24VDC Output 10W
EH137-2	EH181-120 Spare Fuse Kit (2 Primary, 2 Secondary)
EH137-3	EH181-240 Spare Fuse Kit (2 Primary, 2 Secondary)

Dimensional Drawing



Additional Information

R2's External Power Pack is part of the R2 EMOS SIL2 SAFETY-MAINTENANCE & OPTIMIZATION SYSTEM. Contact R2 for more information.