

EMOS® ASSET MANAGEMENT DATABASE

Equipment Tracking Made Easy

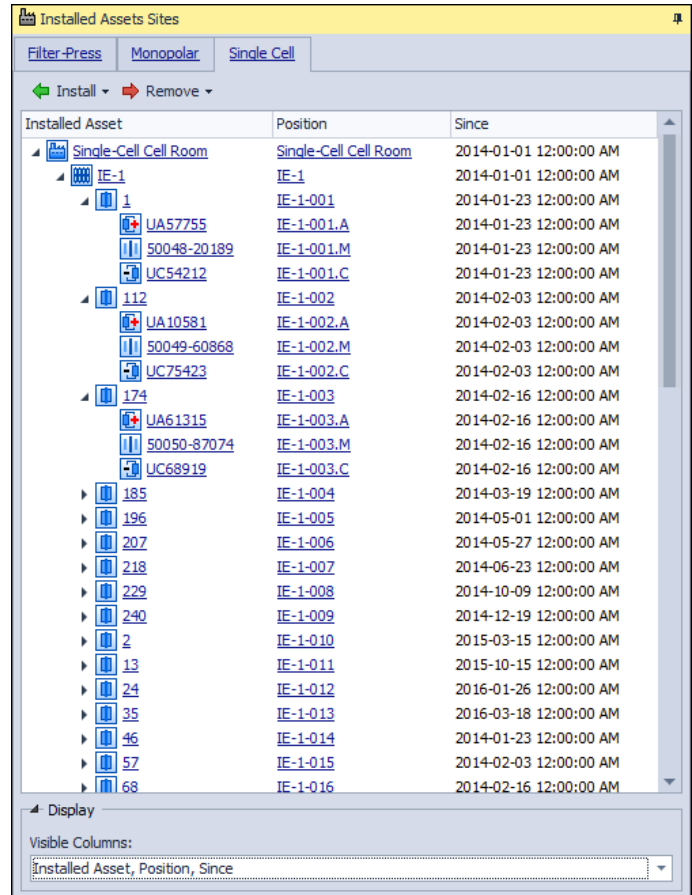
Key Features

- Intuitive Drag and Drop Asset Movement
- Complete Asset Movement and Status History
- Real-Time Validation
- Customizable Data Entry Forms
- Advanced Search, Grouping, and Filtering Capabilities
- Customizable Reports
- File Attachments
- Excel Compatibility
- Fully Backwards Compatible
- Support for Multiple Technology Types, Including: *Filter Press*, *Single Cell*, *Monopolar*, and More
- Support for Multiple Sites
- Integrated Backup and Restore Functionality
- Transaction Logging
- Integration with Other R2 Products

Overview

EMOS® Asset Management Database (AMD) is a software product which provides historical tracking and data entry capabilities for optimizing asset maintenance.

It is one of the cornerstones of the R2 Predictive Maintenance package, and provides a foundation for more advanced software products such as the Strategic Information Repository (SIR) and the Asset Performance Reports (APR).

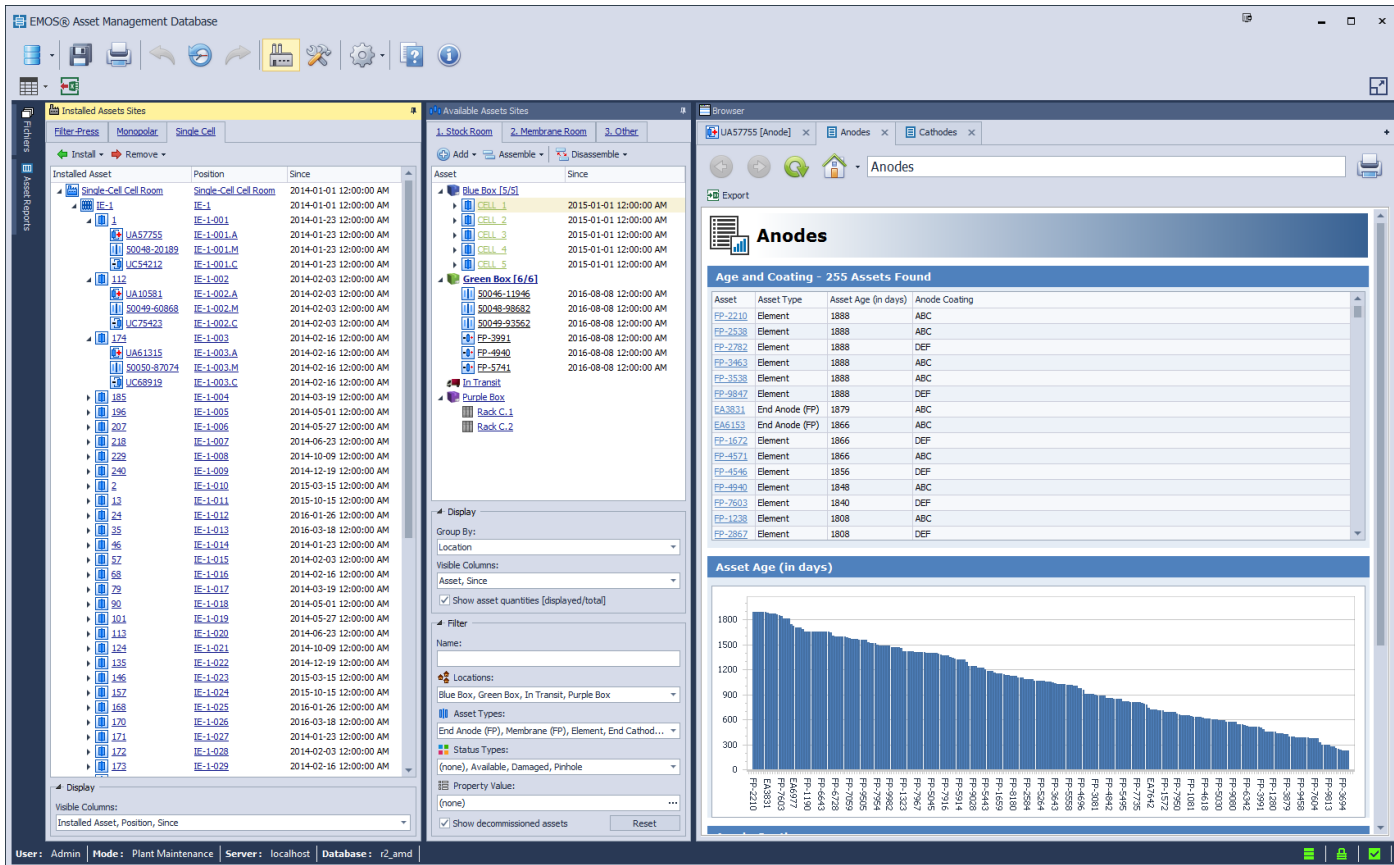


Installed Asset	Position	Since
Single-Cell Cell Room	Single-Cell Cell Room	2014-01-01 12:00:00 AM
IE-1	IE-1	2014-01-01 12:00:00 AM
1	IE-1-001	2014-01-23 12:00:00 AM
UA57755	IE-1-001.A	2014-01-23 12:00:00 AM
50048-20189	IE-1-001.M	2014-01-23 12:00:00 AM
UC54212	IE-1-001.C	2014-01-23 12:00:00 AM
112	IE-1-002	2014-02-03 12:00:00 AM
UA10581	IE-1-002.A	2014-02-03 12:00:00 AM
50049-60868	IE-1-002.M	2014-02-03 12:00:00 AM
UC75423	IE-1-002.C	2014-02-03 12:00:00 AM
174	IE-1-003	2014-02-16 12:00:00 AM
UA61315	IE-1-003.A	2014-02-16 12:00:00 AM
50050-87074	IE-1-003.M	2014-02-16 12:00:00 AM
UC68919	IE-1-003.C	2014-02-16 12:00:00 AM
185	IE-1-004	2014-03-19 12:00:00 AM
196	IE-1-005	2014-05-01 12:00:00 AM
207	IE-1-006	2014-05-27 12:00:00 AM
218	IE-1-007	2014-06-23 12:00:00 AM
229	IE-1-008	2014-10-09 12:00:00 AM
240	IE-1-009	2014-12-19 12:00:00 AM
2	IE-1-010	2015-03-15 12:00:00 AM
13	IE-1-011	2015-10-15 12:00:00 AM
24	IE-1-012	2016-01-26 12:00:00 AM
35	IE-1-013	2016-03-18 12:00:00 AM
46	IE-1-014	2014-01-23 12:00:00 AM
57	IE-1-015	2014-02-03 12:00:00 AM
68	IE-1-016	2014-02-16 12:00:00 AM

Follow your assets from the day they were received to the day they are eventually decommissioned; keeping track of all relevant properties along the way, such as: statuses, comments, inspection/lab results, and more.

Using the new advanced searching and reporting functionality: compare asset ages and properties to complement your predictive maintenance strategy.

A regularly maintained AMD database can then serve as the basis for the more comprehensive predictive maintenance strategy provided by the Asset Performance Reports.



System Requirements

System Requirements	
Operating System	Windows 7 pro 64-bit/ Windows Server 2008 64-bit Or Higher
CPU	Intel i5 minimum, i7 recommended (3GHz or faster)
RAM	8 GB minimum, 16 GB recommended
HDD	250 GB minimum, 500GB SSD recommended
Screen Resolution	1920 x 1080 (or better)

Additional Requirements	
Network	1 GB/s LAN Access for multi-user configurations
Data Ports	USB Port for use of media storage devices
Other Software	Spreadsheet program (Microsoft Excel or other) capable of reading .xlsx files

Related Products

Part Number	Description
SWPER	EMOS® Asset Performance Reports
EN505	EMOS® Cell Performance Analyzer

Ordering Information

Part Number	Description
SW310	EMOS® Asset Management Database Software (Pre-Configured*)

* R2 will pre-configure the database in accordance with your plant's structure and naming convention. Additionally, data can be imported from existing databases (various formats are supported).

Additional Information

EMOS® Asset Management Database is part of R2's Electrolyser Maintenance, Optimization and Safety System. Contact us for more information.